



Karndean  
Designflooring  
Commercial



Concordia Lutheran  
High School

| Education

# The Challenge

Over the last 15 years, Concordia Lutheran High School in Tomball, Texas has been taking advantage of summer breaks to update portions of the campus. In that time, the school has regularly partnered with local retailer Flaherty's Flooring America to replace the school's carpet tile-lined hallways and, with some guidance from owner Patrick Flaherty Jr., has moved from replacing damaged carpet tiles (ranging from 30 to 50 tiles each summer) to choosing a more durable solution - Karndean Designflooring luxury vinyl flooring.



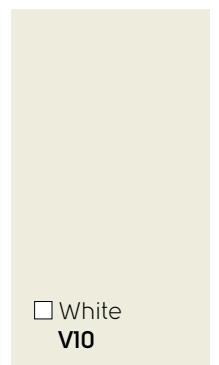
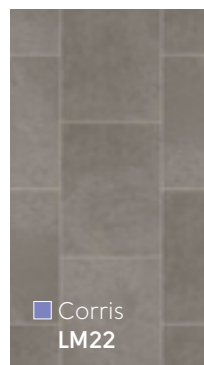
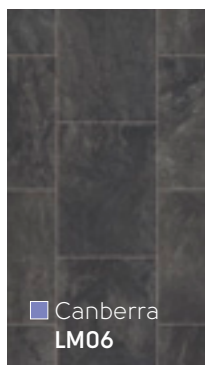
**Sector:** Education

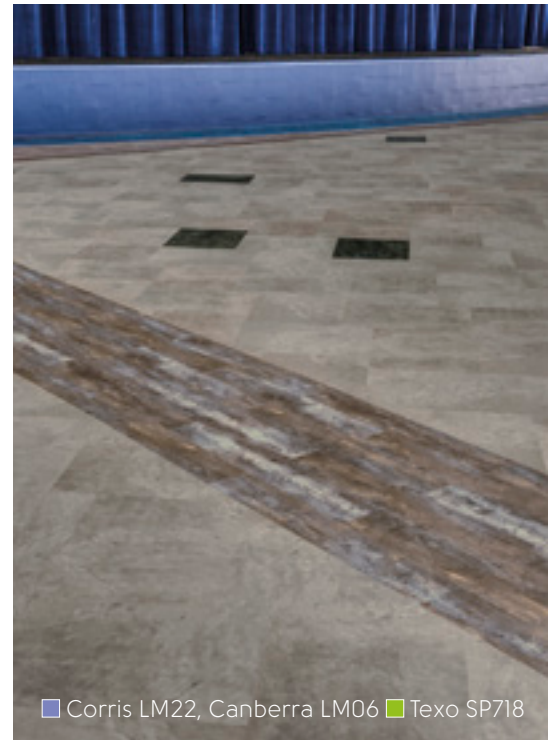
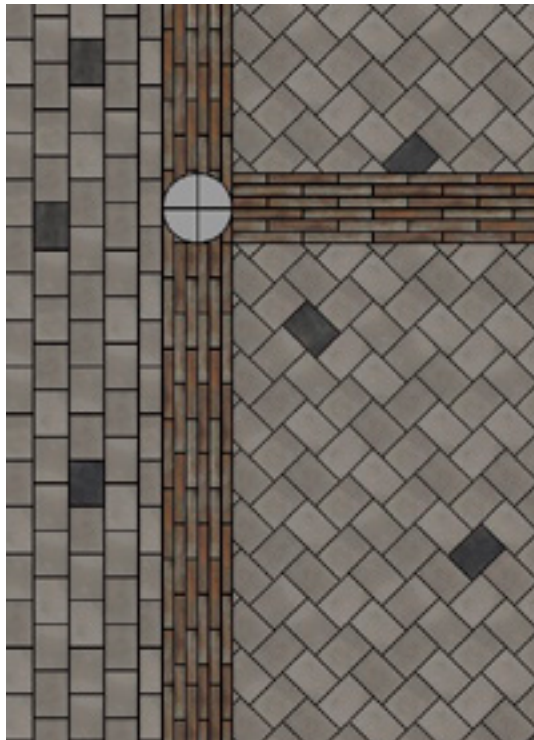
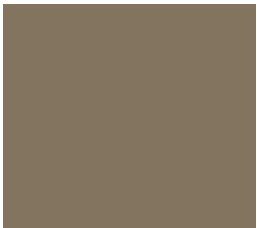
**Client:** Concordia Lutheran High School

**Contact:** Patrick Flaherty Jr., Flaherty's Flooring America

**Area:** 14,500 ft<sup>2</sup>

**Location:** Tomball, TX





■ Corris LM22, Canberra LM06 ■ Texo SP718

## The Solution

As part of the school's most recent summer updates, flooring in the cafeteria, kitchen and surrounding hallways was replaced with Karndean product. "At the end of the day it may be a little more expensive upfront, but this isn't something you'll have to replace after ten years. There are plenty of vinyl options out there, but when we're looking for a good quality vinyl product, we recommended Karndean."

After initial discussions, both the school and the retailer agreed that this type of project called for a more intricate design and layout. For a project of this size, the retailer consulted with the Designflooring Services program for extra expertise and support. Designflooring Services collaborates with you on installation designs, flooring color or specification recommendations and provides project files to import into design plans or to share with a client.

"We went through some samples and talked about how it doesn't have to be a plain floor with gray tiles everywhere. We can do logos with school colors or tie the looks of the athletic wing hallways into the cafeteria, kitchen and entryway," Flaherty said.

Flaherty worked closely with the area Karndean Designflooring Business Manager to help coordinate takeoffs and drawings from the Designflooring Services team to take to the Concordia school board for approval.

The cafeteria and stage area utilized Corris LM22 in a herringbone pattern with Canberra LM06 randomly sprinkled throughout and framed with Texo SP718. The adjacent hallway and kitchen also used Corris LM22 and Canberra LM06, but laid in a brick pattern instead, to lead the eye and instinctually guide foot traffic through those spaces.

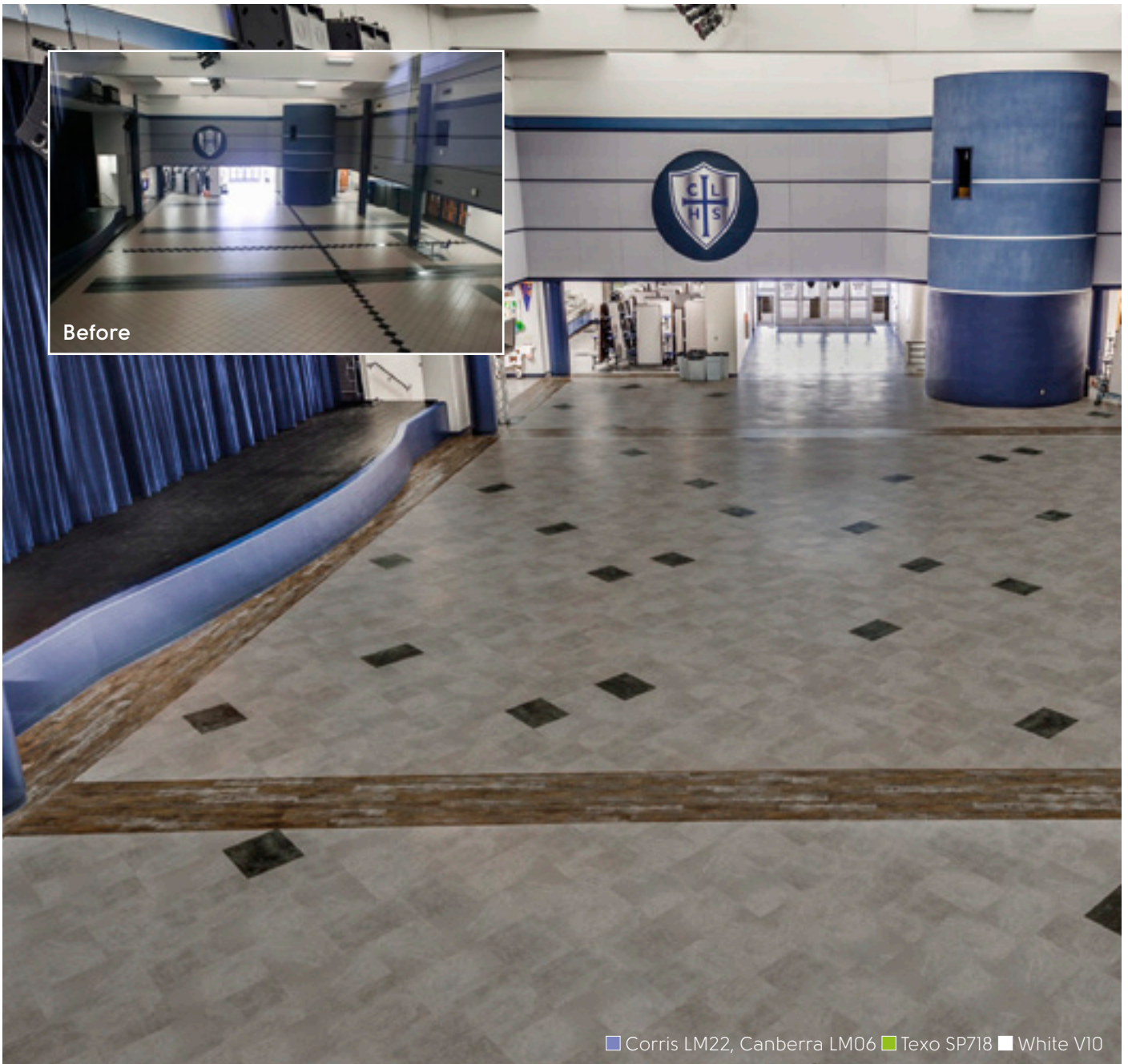
# The Results

"I was at the school recently and the facility manager was telling me how much he loved it. They don't have to worry about kids dropping things on, or staining, the floor. The maintenance isn't nearly as much as it was with the carpet."

As for collaborating with the Designflooring Services team, Flaherty said, "We're a very heavy retail/residential company. This is probably one of the largest projects we've ever gone through. It was helpful that we didn't have to worry about all of the details."

Plans are currently underway for the next phase of summer school updates.

Products used: ■ Corris **LM22**, Canberra **LM06**, ■ Texo **SP718**, □ White **V10**



■ Corris LM22, Canberra LM06 ■ Texo SP718 □ White V10



# Products Specified:



	Standard	Art Select Result	Opus Result
<b>Size</b>		18" x 24" (457.2 mm x 609.6 mm)	6" x 36" (152.4 mm x 914.4 mm)
<b>Thickness</b>		3.0 mm	2.5 mm
<b>Wear layer</b>		30 mil* (0.7 mm)	20 mil* (0.50 mm)
<b>Warranty**</b>	Commercial Residential	20 years Lifetime	15 years Lifetime
<b>Beveled edge</b>		Standard	Micro
<b>Slip resistance***</b>	ASTM D2047	Pass (Dry 0.92)	Pass (Dry 0.89)
<b>Acoustic impact noise reduction</b>	ASTM E2179-09 ASTM E492-09	$\Delta$ IIC = 6 dB IIC = 46 dB (6" Concrete Slab w/Drop Ceiling) IIC = 71 dB (6" Concrete Slab w/Drop Ceiling +QuietChoice)	$\Delta$ IIC = 4 dB IIC = 44 dB (6" Concrete Slab w/Drop Ceiling) IIC = 71 dB (6" Concrete Slab w/Drop Ceiling +QuietChoice)

\* Nominal

\*\* Subject to terms

\*\*\* Slip resistance is measured on freestanding ex-factory product. Slip resistance can be affected by many factors including but not limited to: product installation and underlayment, surface contamination, use, wear and how the product is maintained. Textural variation along the surface of the product can affect nominal values.



■ Corris LM22 ■ Texo SP718

## Technical Information

To view the full technical specification for each of our product ranges visit our website or text any product code to Karndean Info:

[karndean.com/commercialtechdata](http://karndean.com/commercialtechdata)  
(877) 850-0376



# Feeling Inspired?

We have a variety of tools available to help you achieve the look you desire for your project:



## Designflooring Services

Our team of designers are here to help you navigate the infinite possibilities of Karndean Designflooring and personalize a space to fit your needs. Collaborate with Designflooring Services on installation design, flooring recommendations, and using your own designs and project files to bring your vision to life and create a captivating space.

[karndean.com/designflooringservices](http://karndean.com/designflooringservices)

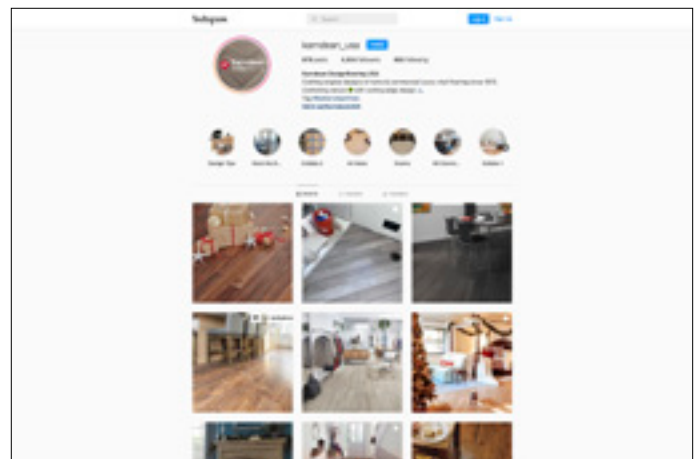
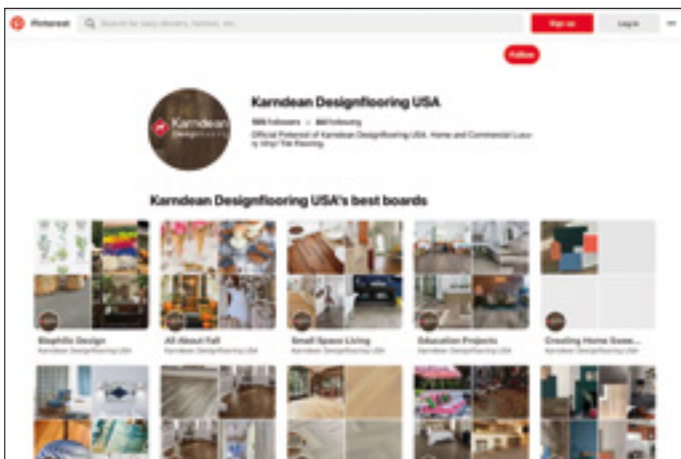


## Digital Product Library

Browse our digital library of commercial luxury vinyl flooring, including our Product Selector and architectural folders, organized by product range and type of visual.

[karndean.com/digitalproductlibrary](http://karndean.com/digitalproductlibrary)

## Keep Up To Date With Us:



Follow our boards on Pinterest  
[karndeandesignflooringUSA](https://www.pinterest.com/karndeandesignflooringUSA)



Follow us on Instagram  
[karndean\\_usa](https://www.instagram.com/karndean_usa)

