

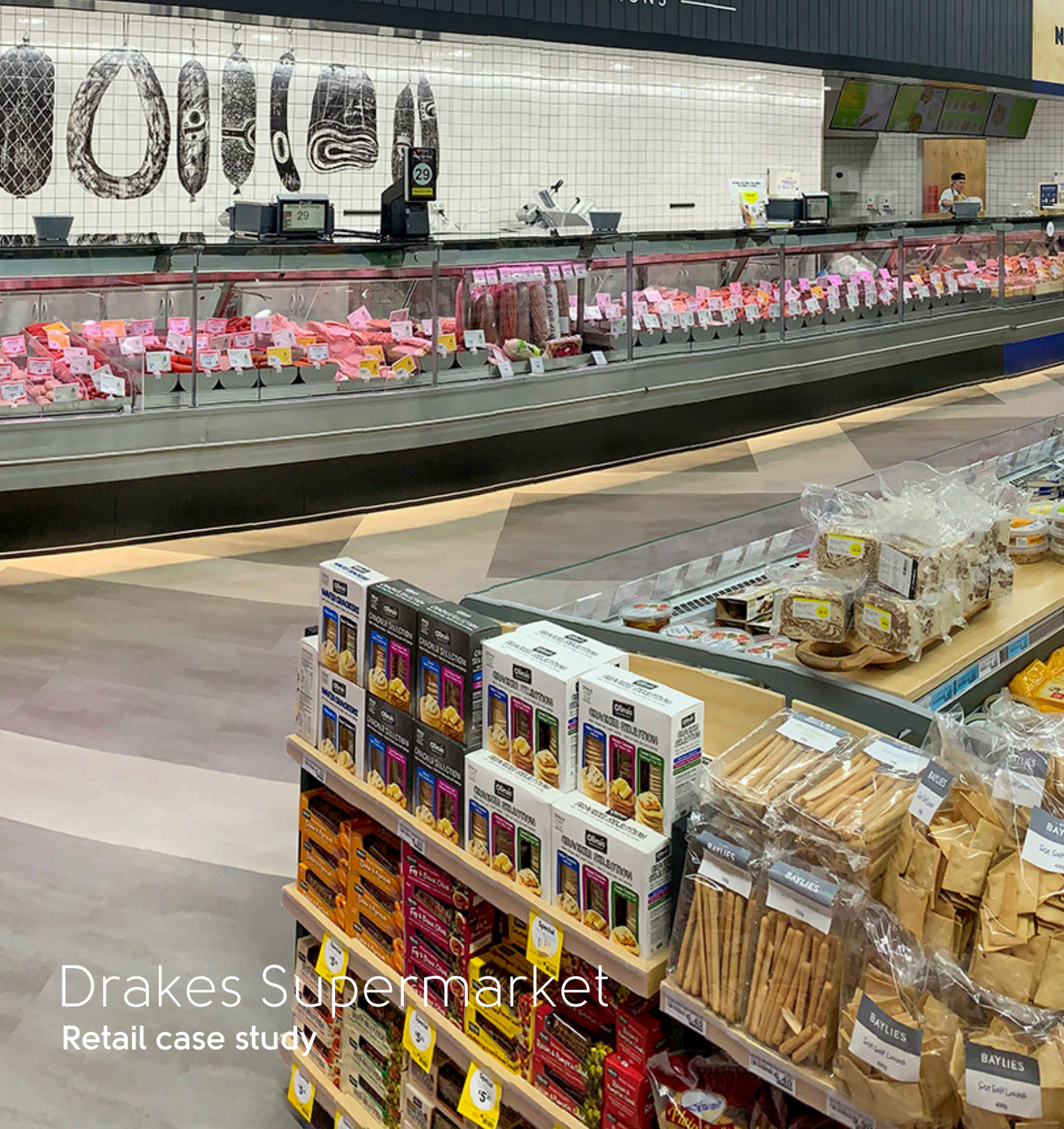
Dei



Karndean
Designflooring

OUR FINEST SELECTIONS

sssen



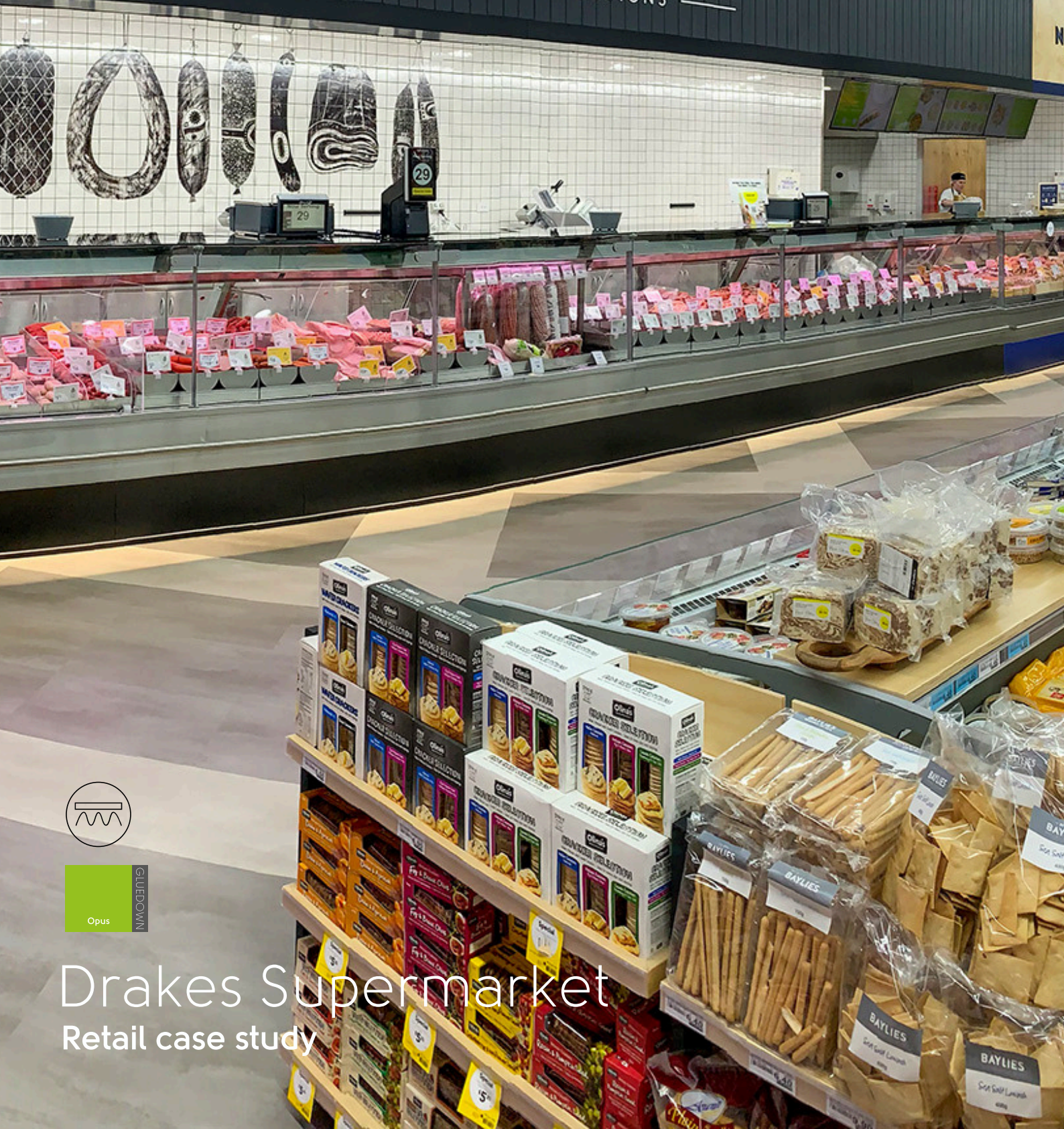
Drakes Supermarket
Retail case study

Delicatessen

OUR FINEST SELECTIONS



Karndean
Designflooring



Gluedown
Opus

Drakes Supermarket
Retail case study

Karndean Opus vinyl flooring, known for its durability and attractive design, has been selected for installation in the new Drake supermarkets located in Springwood. As a trusted and renowned brand, Karndean Opus provides a perfect flooring solution for high-traffic commercial spaces like supermarkets.

Karndean has been supplying flooring to Drake Supermarkets for over 20 years, with their Van Gogh and Art Select planks being used extensively until Drake's rebranding in 2017. Following the rebranding, Drake's designers opted for a more contemporary grey colour palette and chose Karndean Opus tiles to achieve a modern look in their stores. The Opus range's mix of mid-brown and grey hues offers an authentic-looking natural colour variation to complement the style look and feel of Drake supermarkets. With its versatile design, Opus blends seamlessly into various interior styles, creating an inviting atmosphere for shoppers.

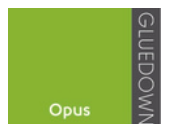
One of the key features of Karndean Opus vinyl flooring is its heavy-duty commercial durability. Its 0.5mm wear layer ensures long-lasting performance, maintaining its appearance and integrity even in high-stress areas.

Safety is another crucial aspect in commercial spaces, especially supermarkets. Opus provides peace of mind with its R10 Slip rating, offering traction and reducing the risk of slips and falls. Additionally, Karndean offers Opus tiles with an R11/P3* slip rating, for higher-risk areas such as the fresh produce area of a supermarket.

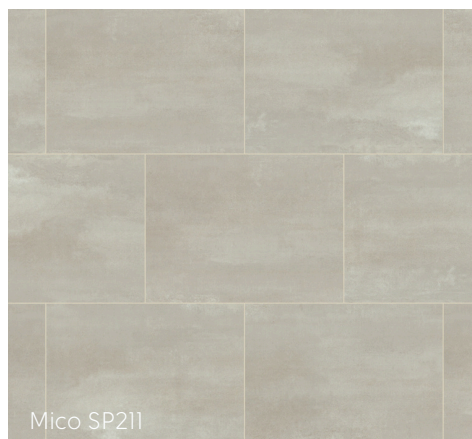
To further assure the suitability of Opus for commercial applications, it comes with a 15-year commercial warranty

The installation of Karndean Opus vinyl flooring in Drake supermarkets not only enhances the visual appeal of the stores but also contributes to the overall shopping experience. Its durability, slip resistance, and long-term warranty ensure that the flooring will withstand the daily challenges of a busy retail environment, providing a reliable and attractive foundation for customers and staff alike.

Sector: Retail
Client: Drakes Supermarket (<https://drakes.com.au/>)
Range: Opus Urbus SP213, Mico SP211, Ombra SP114



Urbus SP213



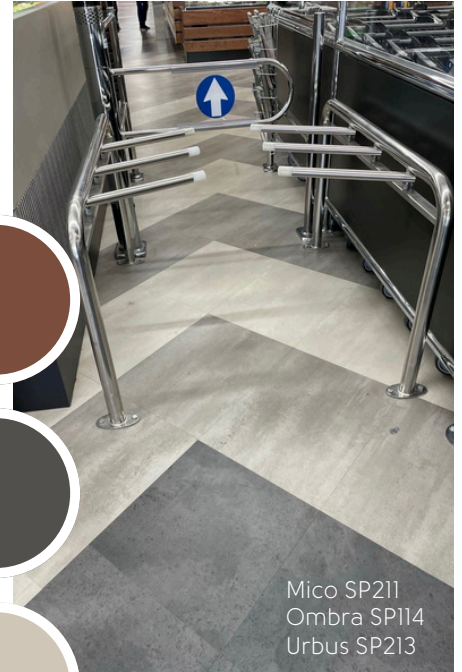
Mico SP211

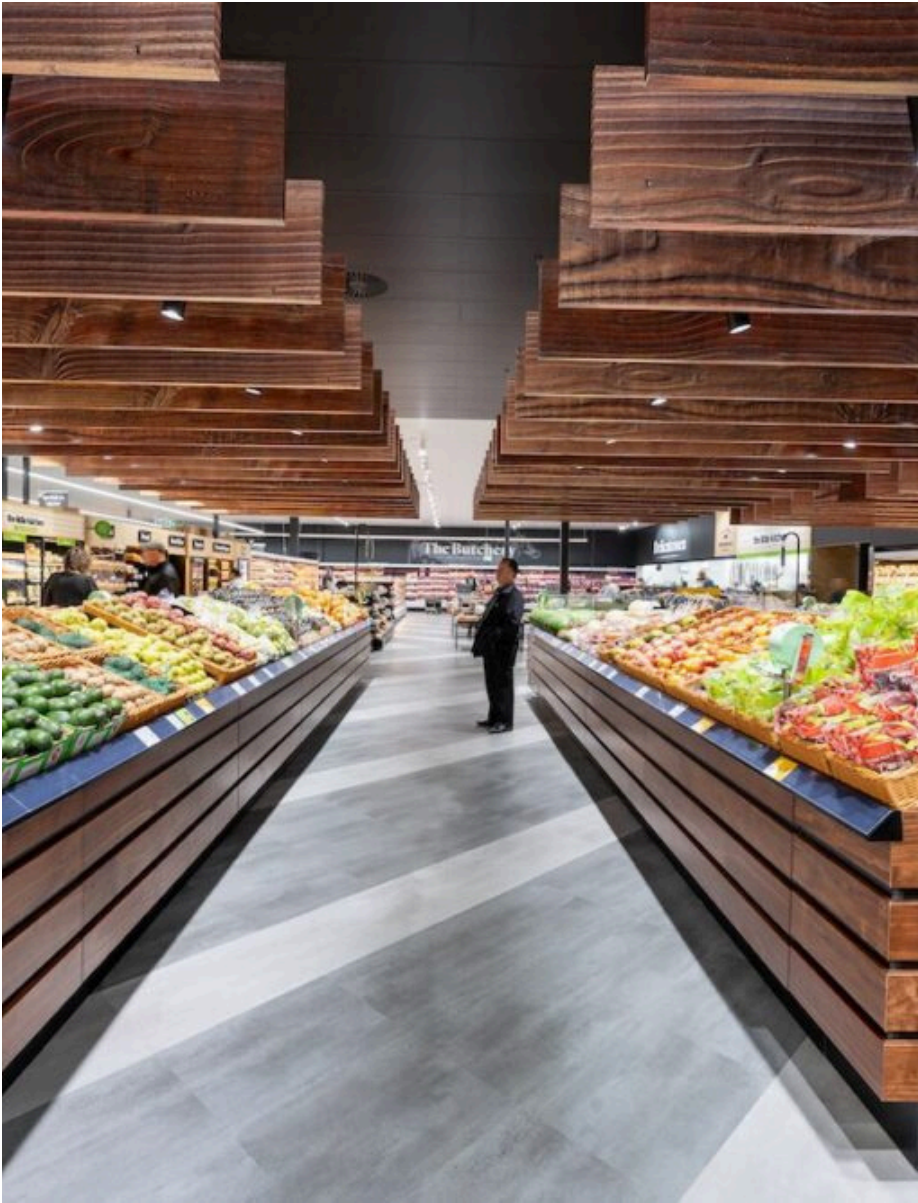


Ombra SP114

*Subject to minimum order requirements and lead times

GreenTag™ Excellence – Our Opus gluedown range receives a GreenTag™ Level 'A' rating for quality sustainable building materials, and GreenTag™ LCARate Silver certification, recognising commitment to safeguarding the planet's biodiversity, ensuring the well-being of workers, and maintaining environmentally friendly manufacturing processes. Additionally, we are the first Australian LVT supplier to achieve Best Environmental Practice PVC in 2015.





Formats

We offer three types of product formats: Loose lay, rigid core and gluedown.

Loose lay



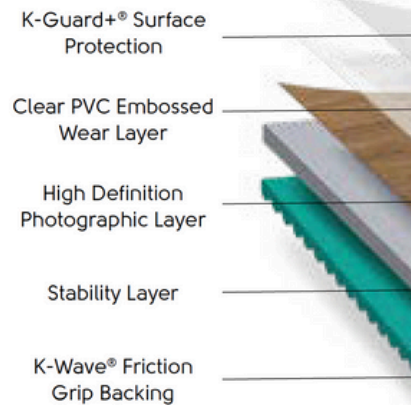
Karndean LooseLay features our K-Wave® friction grip backing which helps hold the product to the subfloor without adhesive, making it quick and easy to install. Ideal for underfloor access panels and temporary roomsets, each plank can be lifted individually where required.

LooseLay Originals

1050 x 250mm plank, 500 x 610mm tile

LooseLay Longboard

1500 x 250mm plank



Rigid core



Our rigid core ranges are ideal for installations where acoustics, uneven subfloors or preservation of existing hard floors need to be considered. A click-locking mechanism allows for quick installation and the preattached backing eliminates the need for a separate underlayment.

Korlok

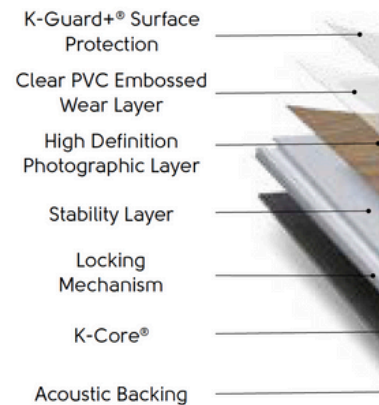
1420 x 225mm plank, 457 x 600mm tile

Van Gogh

1220 x 180mm plank

Knight Tile

1220 x 180mm plank, 305 x 457mm tile



Gluedown



Our gluedown ranges offer our widest choice of colours and formats. Features such as textured emboss or our premium handscraped finish, wide bevels or flat edges make each range unique to Karndean Designflooring.

Art Select

228 x 76mm, 915 x 152mm, 1219 x 178mm plank

Van Gogh

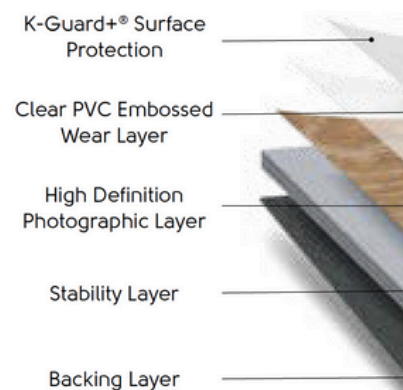
1219 x 178mm plank

Opus

915 x 152mm, 1219 x 228mm plank, 457 x 610mm tile

Knight Tile

1219 x 178mm plank, 305 x 305mm, 305 x 457mm tile



Alternative designs

Create the same look for your commercial project.

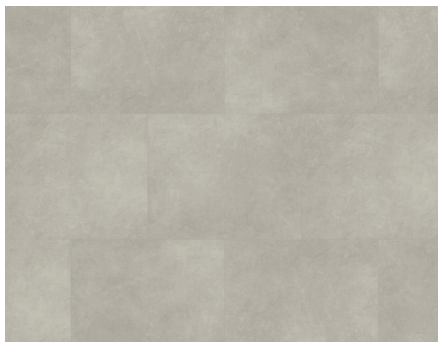
We have a variety of products to match, within our ranges.



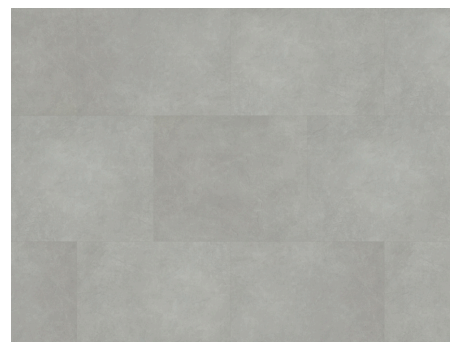
Loose lay



Tino LLT208



Quebec LLT219



Ontario LLT218



Rigid core



Smoke RKT2412



Misty Grey Oak SCB-VGW112T



Natural Ecru RKT3015-G



Gluedown



Dove Grey Concrete ST21



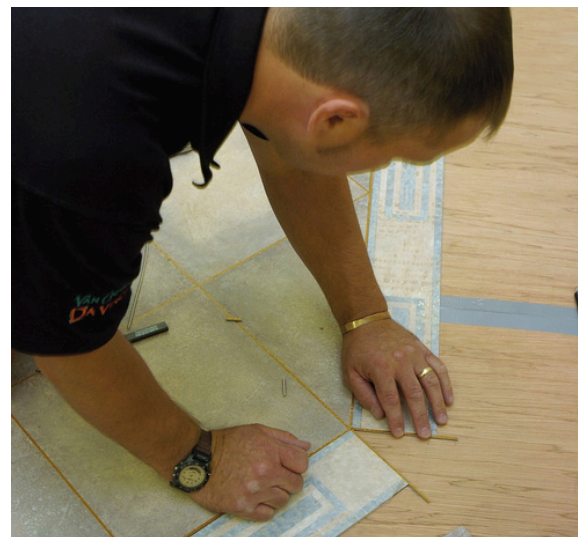
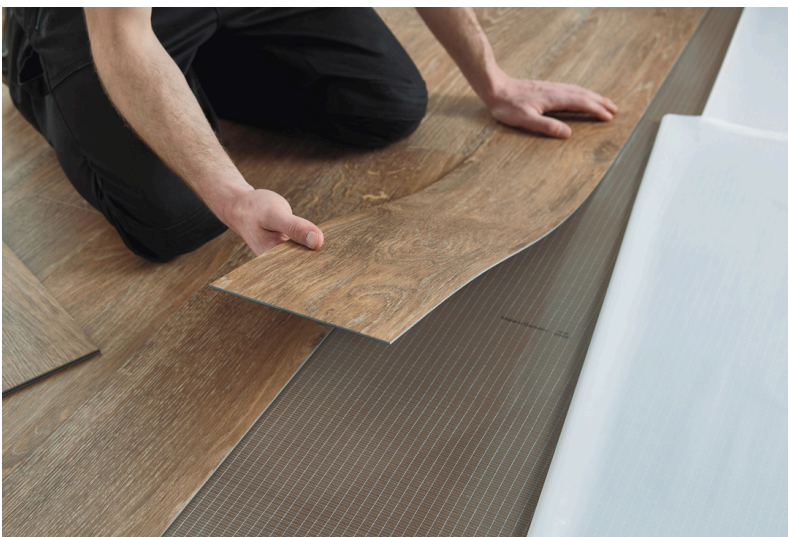
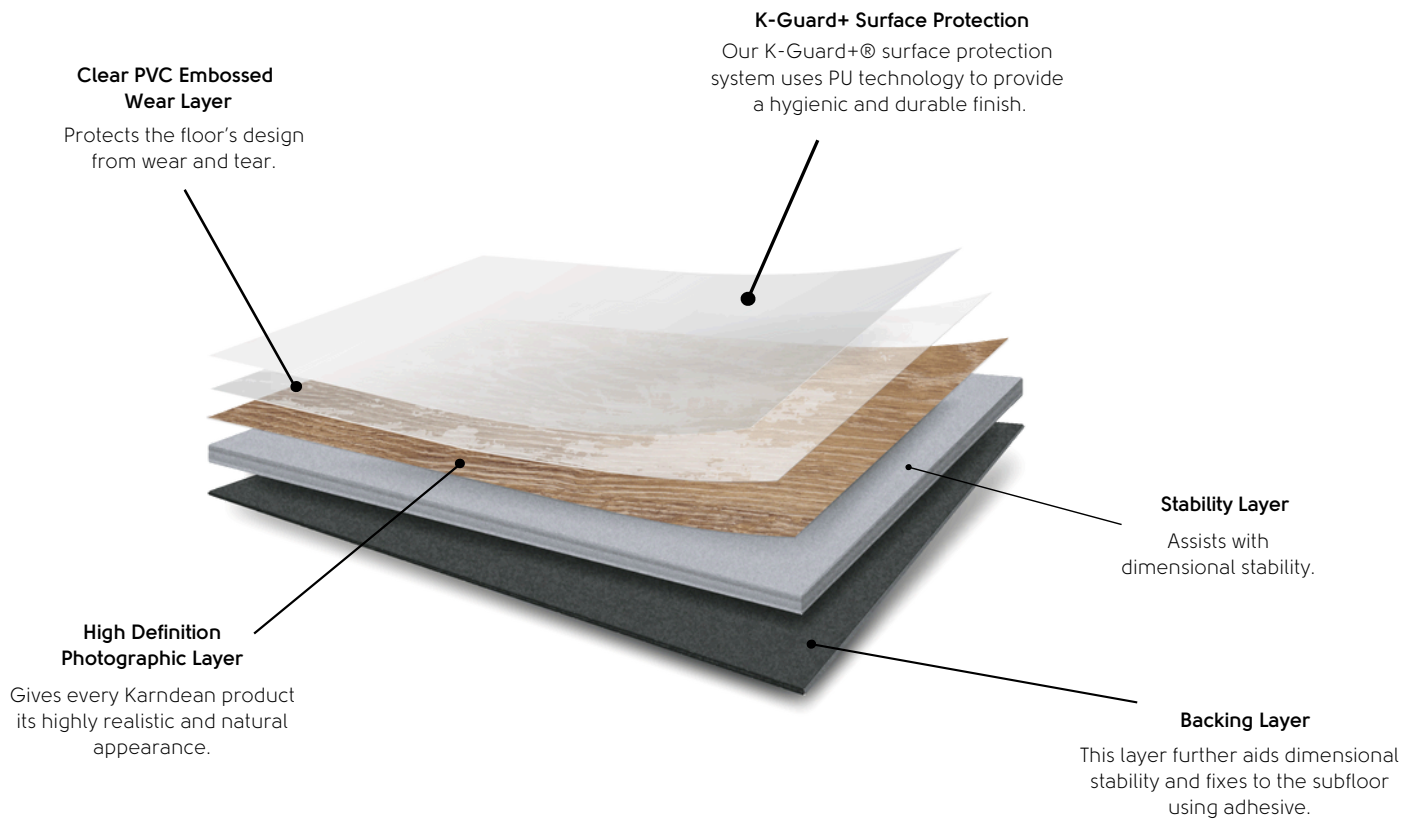
Griega Oak SCB-VGW110T



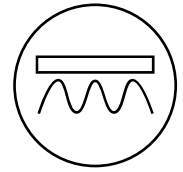
Argento SP216

Why choose a gluedown floor?

With our gluedown format you have complete control over the look of your floor, from the laying pattern to the incorporation of our design strips and borders.



The benefits of Karndean Gluedown



Individually replaceable

Gluedown Planks and tiles can be individually replaced should the need arise.



Design capabilities

Choose your preferred laying pattern and customise your gluedown floor with our design strips and borders.



No expansion gap required

Unlike rigid core, gluedown floors do not require an expansion gap.



Individual, glued down planks and tiles

Our gluedown planks and tiles are individually glued down using a hard set adhesive.

With all the added benefits of Karndean luxury vinyl flooring...



Realistic designs



Durable



Low maintenance



Comfort



Environmentally friendly



Hygienic



Warranty*



Bleached Grey Walnut WP329



Grey Limed Oak KP138-7 / SCB-KP138

*Lifetime 35 years residential and up to 20 years commercial

Karndean Evolve™

Karndean's commitment to creating a more sustainable future is a continuing journey, and there are no shortcuts. But Karndean know now is the time for everyone to begin taking bigger steps. Karndean's is a promise to think differently, act decisively, and create real change.

It's a promise to Evolve.

Five decades ago, the Karndean family-owned business was founded on innovation, bold action and a pioneering spirit. Fifty years later, those same ideals guide them forward. Because the future demands change.

Visit karndean.com/evolve for more information.



Confront climate change



Karndean's products prioritise sustainability through remarkable longevity, with a guaranteed service life of 35 years for domestic use. This extended durability has a significant positive environmental impact over time, promoting an eco-friendlier future.

Health & wellbeing



Karndean's products prioritise wellbeing, surpassing mere aesthetics. Free from harmful substances like heavy metals and unsafe phthalates, they're certified for indoor air quality post-installation. Our dedication to healthy interiors extends to using water-based or solvent-free adhesives, minimizing VOC emissions. Your health and comfort are central to Karndean's designs.

Inclusion & diversity



Third-party certifications for environmental and social responsibility, including fair treatment and safe conditions for workers. Karndean's factories prioritise recycled materials and recyclability, to ecofriendly product packaging, setting the benchmark for environmental responsibility. Certified manufacturing adhering to ISO 14001 and ISO 9001 standards.

Sustainable use of resources



Karndean prioritise the use of recycled materials in their products, with all of them incorporating up to 50% recycled PVC in their backing layers, sourced from post-production waste. We validate our contribution to reducing landfill and promoting recycling.

Inclusion & diversity



We prioritise equity, inclusivity, and diversity, fostering them through engagement and education. In our workplace, we celebrate everyone's contributions as responsible corporate citizens. These values influence our environmental policies, responsible sourcing/trading, and contributions to communities. Our founder's principles still shape our commitment to responsible operations.

Inclusion & diversity



We educate employees about the importance of sustainability, helping them understand what role they play and devise new ways of working. By conducting CPD classes and speaking engagements with organisations like the Green Building Council of Australia, we actively contribute to the training of professionals in the design, construction, and built industries.

Karndean Resources

Please follow the below links to our technical datasheets, installation guidelines & other helpful resources



Karndean accreditations and affiliations



GreenTag™ Excellence – Karndean gluedown and loose lay formats have a GreenTag™ LCARate Silver certification, recognising commitment to safeguarding the planet’s biodiversity and maintaining environmentally friendly manufacturing processes.

*Van Gogh, Knight Tile & Korlok rigid core accreditation coming soon H2 2024

**Certification certificates are available upon request. Please contact your Karndean Business Manager or alternatively our Customer Service Team.

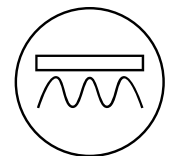
Helpful Resources




[Technical datasheets](#)
[Installation Guidelines](#)
[BIMstore files](#)
[Warranty](#)

[Brochures](#)
[Cleaning & maintenance](#)



Product specified:
Opus



	Standard	Result
 Size		Tile 457.2mm x 457.2mm 457.2mm x 609.6mm
 Thickness		2.5 mm
 Wear layer		0.5 mm
Guarantee	Commercial Residential	15 years wear* Lifetime wear*
Slip resistance	AS/NZ4586	R10

* Subject to terms. View our [guarantee](#)

See Technical Data Sheet via the QR code above for full specification

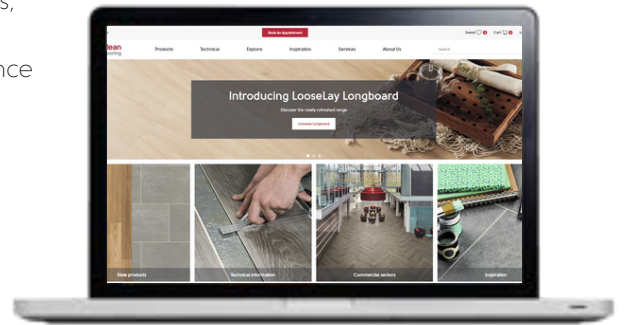
Visit us online at karndean.com where you can...

Find website support

The website offers a wealth of inspiration, case studies and design ideas, detailed technical information and a look inside our head office and warehouse. When you are designing floors this is your point of reference for information, samples and practical support.

Website tools include:

Product Selector	Installation guidelines
Digital Specification Library	Order samples
Technical data	Brochures
Sector application	BIM files



Order samples

If you need some extra help selecting the best colour for your project, why not order some cutting samples? These are small swatch samples designed to help you pick which product is right for you.

www.karndean.com/commercialsamples



[Samples](#)



Check out our Digital Specification Library

We have developed a great tool which allows you to pick a room or upload a photo of your space and see what different floors will look like. It's really easy to use and will allow you to create your perfect Designflooring combination.

www.karndean.com/digitalspecificationlibrary



Sign up for our e-newsletter

We'd love to keep in touch with you. To receive our latest Karndean updates including design, technical data and BIM files, sign up online today at www.karndean.com

Keep up-to-date with us


Follow us on our social media channels.

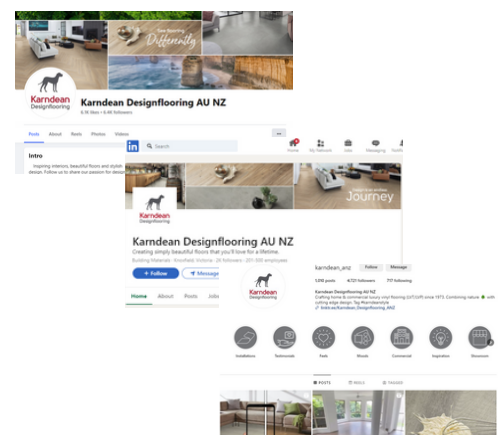
 Karndean Designflooring ANZ

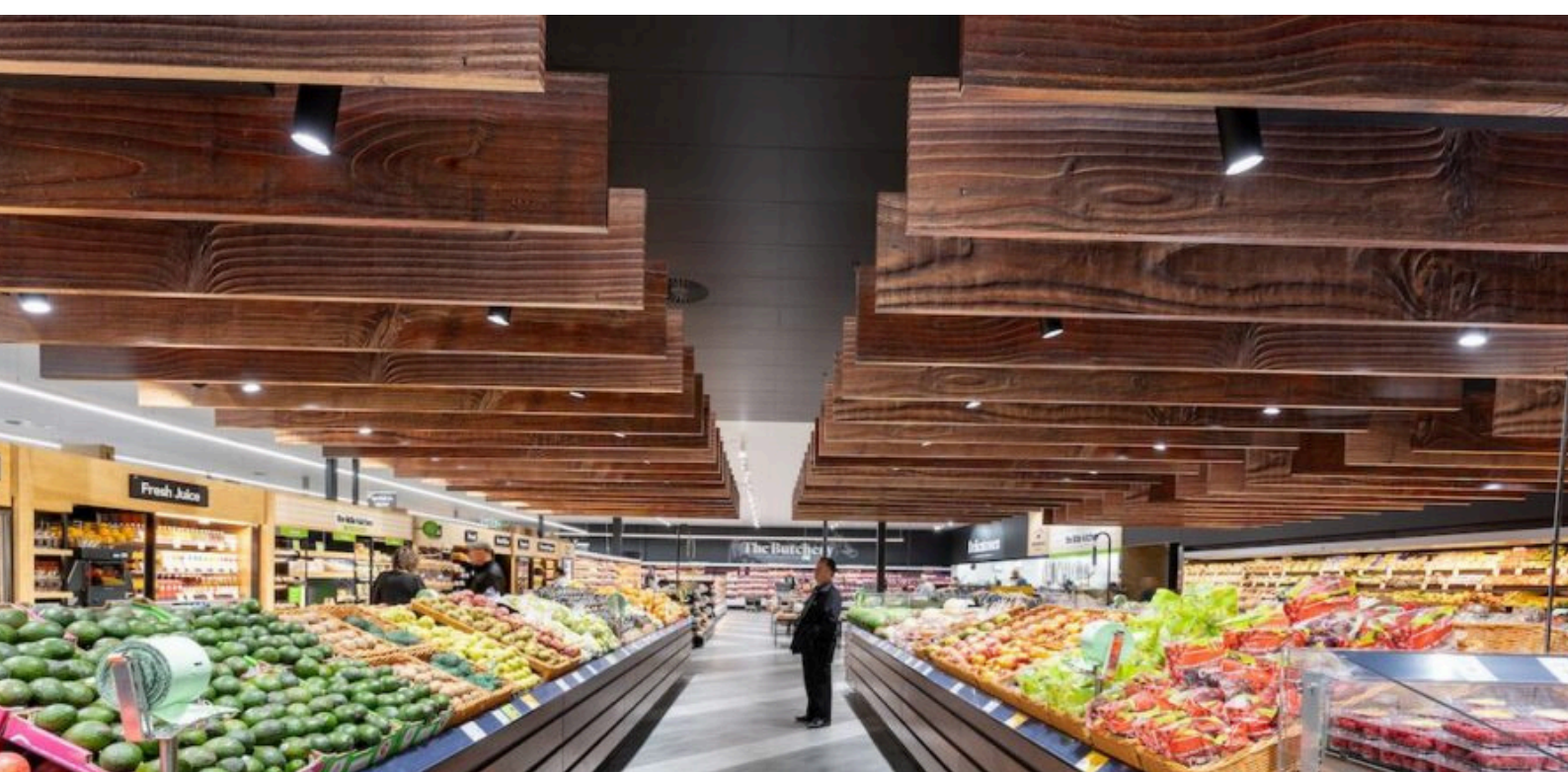
 karndean_anz

 karndean_anz

 Karndean_anz

 KarndeanDesignFloors





Imagery and Design Reproduction

Photography and print cannot always produce a perfect representation of our products. This includes colour, pattern variation and installation elements used. For this reason we strongly recommend obtaining a product sample and where possible viewing a larger sample in-store. We also recommend visiting our website for information on installation, after care and product selection: www.karndean.com/advice. We love developing new ideas and improving on our existing designs which means that sometimes products are withdrawn at short notice. We hate to disappoint and will work with you to find an alternative design. Please contact Customer Service for more information.

Contact us

Phone: AUS - 1800 331 170* / NZ - 0800 442 101*

Email: customerservice@karndean.com.au
customerservice@karndean.co.nz

Web: www.karndean.com

Address: 835 Stud Road Knoxfield,
 Victoria 3180, Australia

*Calls may be recorded for training and quality purposes.



Karndean
 Designflooring

